

# INDEPENDENT SENIOR LIVING



**Apartment Residence**



A SOUTHBRIDGE® RETIREMENT COMMUNITY

# NO DECISION IS MORE IMPORTANT THAN THE PLACE YOU CHOOSE TO CALL HOME.



With beautiful, mature shade trees, sunny balconies and patios, and manicured grounds, the **Chelsey Park Apartment Building** at 314 Oxford Street West is a wonderful place for you to come home to. Well maintained one, two and three bedroom apartments are available to rent in this seven story structure.

Tenants enjoy an independent lifestyle, social and recreation programs, 24 hour emergency call bells, membership to the Health Club and the option to purchase a variety of services: meals, laundry, housekeeping, maintenance, and more.

In addition, a selection of quality services are also available by calling 519-432-1845 for more information and pricing.

## ACCOMMODATIONS & FEATURES

- One, two or three bedroom apartments with a balcony, patio or enclosed sunroom
- Individual thermostat controls
- 24 hour emergency response connected by pull-cord in each apartment
- Membership to on-site Health Club including a heated indoor pool, sauna, whirlpool and strength training centre
- Monthly newsletter and a calendar of social and recreation events
- Monthly rental invoice delivered to apartment
- Personal mailboxes, with Canada Post mailbox in lobby
- Purchasing options for a wide range of services
- Utilities included (excludes phone and cable service)
- Pet friendly with approval
- In-apartment storage room



## AMENITIES & SPECIAL FEATURES

Beautifully landscaped grounds surround the well appointed independent apartment building at 314 Oxford Street West.

An elegant, licensed dining lounge serving delicious meals is open to the public, family members and friends. Dining lounge menus are delivered on a regular basis to all of the Apartments and Retirement Suites so that tenants may enjoy a preview of the upcoming meals.

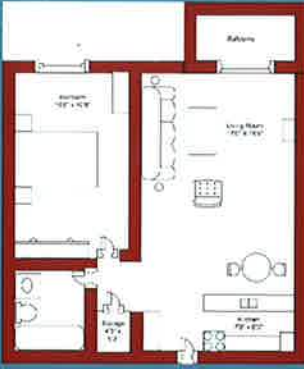
Listed below are some of the many amenities and special features of the Chelsey Park Apartments:

- Social and recreation programs, monthly newsletter, community outings and weekly bus service to Cherryhill Village Mall in an air-conditioned, wheelchair accessible bus
- Laundry rooms on the 1<sup>st</sup>, 2<sup>nd</sup>, 4<sup>th</sup> and 5<sup>th</sup> floors
- Health Club including heated indoor pool, sauna, whirlpool, sun deck and strength training centre
- Wellness Centre (massage therapy, acupuncture, chiropractor, aesthetics)

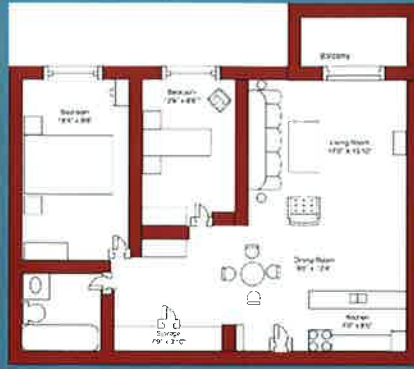
- Wheelchair accessible automated door system
- Security door system, fire alarm system
- Computer/craft lounge, library, billiard, games
- Woodworking room
- Complimentary use of our in-house common lounges for special occasions
- Indoor walkway links the apartment building to the retirement residence and all amenities
- Beauty salon
- A variety of on-site medical services including a pharmacy, doctor and dental offices
- Close to Cherryhill Village Mall, Cherryhill Medical Building and London Public Library
- City bus stop shelter at main entrance
- Short stay accommodation for visitors respite, trial convalescent, seasonal/vacation stays in our respite suites (based on availability)
- On-site chapel, monthly denominational church services and transportation to and from community churches
- Co-located with a Retirement Residence and an accredited Long-Term Care facility.



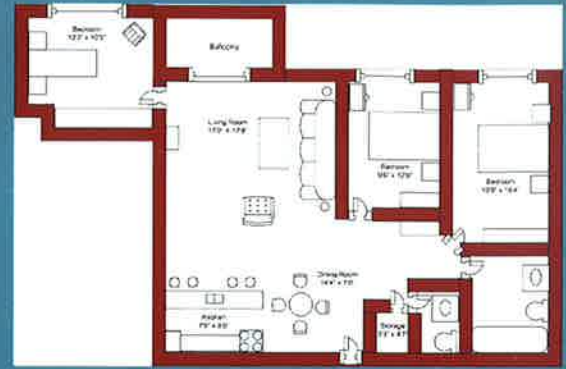
## Sample Apartments



One Bedroom



Two Bedroom



Three Bedroom



### Chelsey Park Retirement Community

Apartment Residence  
314 Oxford Street West  
London, ON N6H 4N8  
Ph. 519-432-1845  
Fx. 519-432-7548  
[www.chelseypark.com](http://www.chelseypark.com)



A SOUTHBRIDGE® RETIREMENT COMMUNITY